



## WRAPMATIC OPTIONS AND ACCESSORIES

The Wrapmatic shrink wrapping system from LPS include a wide range of options and accessories provided for your packaging needs. Options include a range of conveyor belt kits, guides, photocell kits and additional options.



### Different Types of Conveyor Belt Kits For The Wrapmatic

NT230A20 CONVEYOR BELT WITH PUSHERS 381X500 MM 200-240V 50/60HZ  
NT230A21 CONVEYOR BELT WITH PUSHERS 381X1000 MM 200-240V 50/60HZ  
NT230A22 CONVEYOR BELT WITH PUSHERS 381X2000 MM 200-240V 50/60HZ  
NT230A01 CONVEYOR BELT 400X1000 MM 200-240V 50/60HZ  
NT390A01 CONVEYOR BELT 700X1000 MM 200-240V 50/60HZ  
NT230A02 CONVEYOR BELT 400X2000 MM 200-240V 50/60HZ  
NT230BA02 CONVEYOR BELT WITH PUSHERS 400X2000 MM 230V 50/60HZ  
NT390A02 CONVEYOR BELT 700X2000 MM 200-240V 50/60HZ  
NT230A30 CONVEYOR BELT CURVED 180° L.456 MM - R1.0M 200-240V 50/60HZ  
NT230A31 CONVEYOR BELT CURVED 180° L.379 MM - R0.8M 200-240V 50/60HZ  
FM710359 BLUE CONVEYOR BELT FOR CONTACT WITH ALL FOOD PRODUCTS 2935X400 MM  
FM710373 BLACK HIGH FRICTION CONVEYOR BELT FOR SLIPPERY PRODUCTS 2935X400 MM



**NT230A20 - Conveyor belt with pushers**



**NT230A30/NT230A31 - Conveyor belt curved**



**FM710359- Blue conveyor belt for food**

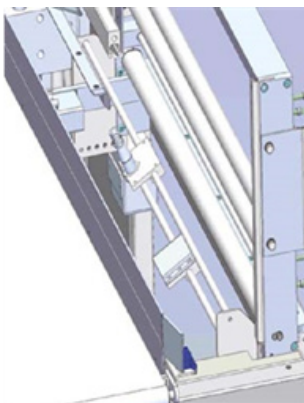


**NT230A02/NT230BA02/NT390A02 - Conveyor belt**

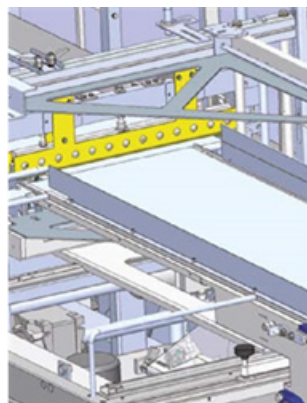
# WRAPMATIC OPTIONS AND ACCESSORIES

## Different Types of Guides and Kits For The Wrapmatic

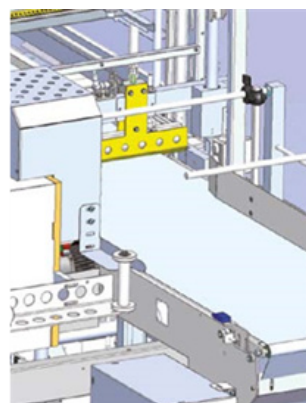
Product	Description	Purpose	Advantages
<b>KR210068</b> Pneumatic Perforator Kit	Plastic film hole puncture system with a 5 mm diameter	It substitutes the micro-perforated film allowing the air to leak out from only one hole which will be covered, when the packaging is done, with the product's label	It is ideal for packaging food products such as cheese, poultry and fruits by covering with a label the hole made by the packaging process so that the outside air does not leak in
<b>KR210076</b> Guide Kit for Unstable Products	Two guides of 70 mm in height placed to the right and left sides of the inlet conveyor belt	They keep "unstable" products aligned with the belt	The machines gains in versatility by also packaging unstable products
<b>KR210082</b> Adjustable Guide Kit Exit Belt for Unstable Products	Two adjustable guides from 0 to 120 mm high placed beside the outlet conveyor belt	They allow unstable products to be channelled towards the tunnel's interior	You can package unstable products without making them fall during the process
<b>KR230105</b> Anti-wrinkle Small Rod Kit	Tubular rod positioned under the film opener triangle	It eliminates angles and wrinkles in the film	The packaging is more precise and it gives a better aesthetics result
<b>KR230107</b> Quick Reel Change Kart Kit	External support for a second film roll	You can quickly change the roll by applying a sticker between the roll that is about to finish and a new one	Roll change time is reduced by 50%, so you can optimize your work flow
<b>KR230106</b> Frontal bar Air Blower Kit	Tubular shaped object placed under the triangle that blows air	By blowing air inside the packaging bag, it eliminates wrinkles	The operator's work is facilitated, thus optimizing time, and the packaged product's aesthetics is more precise



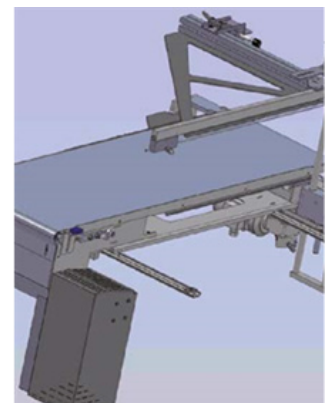
**KR210068 - Pneumatic Perforator Kit**



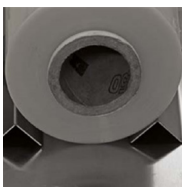
**KR210076 - Guide Kit for Unstable Products**



**KR210082 - Adjustable Guide Kit Exit Belt for Unstable Products**



**KR230105 - Anti-wrinkle Small Rod Kit**

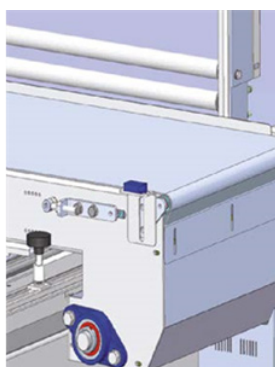


**KR230107 - Quick Reel Change Kart Kit**

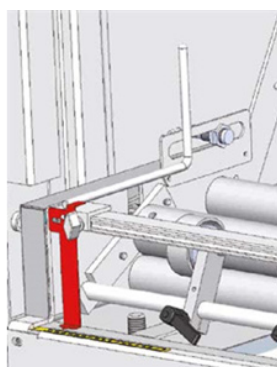
# WRAPMATIC OPTIONS AND ACCESSORIES

## Different Types of Photocell Kits For The Wrapmatic

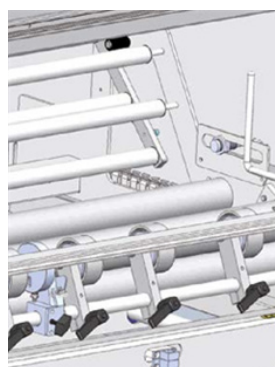
Product	Description	Purpose	Advantages
<b>KR210072</b> Incoming Product Photocell Reader Kit	Photocell placed at the machine's inlet conveyor belt	It gives the START command to the machine when a product to be packaged comes from another line	The machine can be placed within a line and it starts only in case a product arrives to be packaged
<b>KR210070</b> End Film Photocell Kit	A photocell that reads the diameter of the film's roll	It warns the operator when the roll is finished	The machine warns and stops the production flow to allow the necessary roll substitution
<b>KR210071</b> End Reel Photocell Kit	A photocell that reads the diameter of the film's roll	Before the roll finishes it warns the operator with a light signal	The operator can prepare himself/herself ahead of time to substitute the roll and so optimize the work-time
<b>KR210080</b> Photocell "5" Kit for Products with Irregular Shapes	Five photocells placed right before the sealing bar	A block of photocells, 50 mm high, that allows the reading of any product's shape	One can package products completely irregular in shape (bananas, salads, mechanical products)
<b>KR210069</b> Photocells for Printed Film Kit	U shaped photocell that allows the reading of the label on the film	Helps to place a desired personalized print on the product	Your packaged product is personalized with many different prints
<b>KR230215</b> Photocell Kit for Product Security	A photocell placed under the sealing bar	It avoids the sealing bar coming down if a product is directly placed under it	In the case of fragile products you can avoid possibly damaging the sealing bar



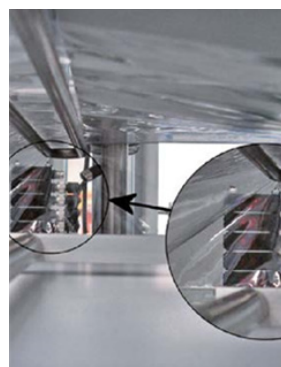
**KR210072- Incoming Product Photocell Reader Kit**



**KR210070 End Film Photocell Kit**



**KR210071 End Reel Photocell Kit**



**KR210080 Photocell "5" Kit for Products with Irregular Shapes**



**KR210069 Photocells for Printed Film Kit**

# WRAPMATIC OPTIONS AND ACCESSORIES

## Different Types of Technology Kits For The Wrapmatic

Product	Description	Purpose	Advantages
<b>KR210095</b> Wireless Button Panel Kit	Remote control with START/STOP functions	Remote control of the machine's start and stop functions from a distance of up to 15 m	The operator can be placed at a distance and they can start or stop a machine, thus facilitating one's own production needs
<b>FE122091</b> Biometric Reader for HMI-USB	Biometric reader mounted on the machine	It recognizes the operator's fingerprints	Secure use of the machine
<b>FE122063</b> Access Point Wi-Fi 2.4 GHz DIN RAIL	Module that allows a Wi-Fi connection	You can connect an external device such as a smartphone, a tablet or a computer	Control the machine from a distance with a remote display of its functions.
<b>KR230214</b> Tele-assistance Box Kit	Box with a module for tele-assistance	It can be connected with the machine's PLC and the latter connects directly with one of our technical assistants	The machine can be assisted from a remote distance
<b>KR230216</b> Tele-assistance Module Kit mounted on the Machine	Tele-assistance module	With this module the machine connects directly with one of our technical assistants	The machine can be assisted from a remote distance



**KR210095** Wireless Button Panel Kit



**FE122091** Biometric Reader for HMI-USB



**FE122063** Access Point Wi-Fi 2.4 GHz DIN RAIL



**KR230214** Tele-assistance Box Kit



**KR230216** Tele-assistance Module Kit mounted on the Machine



# WRAPMATIC OPTIONS AND ACCESSORIES

## Summary of Options

	240 / 240CS	240E	240E SIDE	360
<b>Belt Kits</b>				
Conveyor belt with Pushers 381x500MM 200-240v 50/60h	Y	Y	Y	N
Conveyor belt with Pushers 381x1000MM 200-240v 50/60hz	Y	Y	Y	N
Conveyor belt with Pushers 381x2000MM 200-240v 50/60hz	Y	Y	Y	N
Conveyor belt 400x1000MM 200-240v 50/60hz	Y	Y	Y	N
Conveyor belt with Pushers 400x2000MM 230v 50/60hz	Y	Y	Y	N
Conveyor belt 400x2000MM 200-240v 50/60hz	Y	Y	Y	N
Conveyor belt 700x1000MM 200-240v 50/60hz	N	N	Y	Y
Conveyor belt 700x2000MM 200-240v 50/60hz	N	N	Y	Y
belt Curve 180° 1.456MM - r1,0 200-240v 50/60hz	Y	Y	Y	N
belt Curve 180° 1.379MM - r0,8 200-240v 50/60hz	Y	Y	Y	N
blue belt for food 2935x400MM	Y	Y	Y	N
black belt for high friction 2935x400MM	Y	Y	Y	N
<b>Guides &amp; Other Kits</b>				
guides kit for unstable Products	Y	Y	Y	N
adjustable guide kit Exit belt for unstable Product	Y	Y	Y	N
Pneumatic Perforator kit	Y	N	Y	N
anti-wrinkle Small rod	Y	Y	Y	N
frontal bar air blower kit	Y	Y	Y	N
<b>Photocell Kits</b>	Y			
incoming Product Photocell reader kit	Y	Y	Y	Y
End film Photocell kit	Y	Y	Y	Y
End reel Photocell kit	Y	Y	Y	Y
Photocell "5" kit for Products with irregular Shape	Y	Y	Y	Y
Photocells for Printed film kit	Y	Y	Y	Y
Photocell kit for Product Security	N	N	Y	Y
<b>Technology Kits</b>				
wireless button Panel kit	Y	Y	Y	Y
biometric reader	Y	Y	Y	Y
access Point Wi-Fi 2.4 ghz din rail	Y	Y	Y	Y
Tele-Assistance box kit	Y	Y	Y	Y
Tele-Assistance Module kit (Mounted on the Machine)	Y	Y	Y	Y